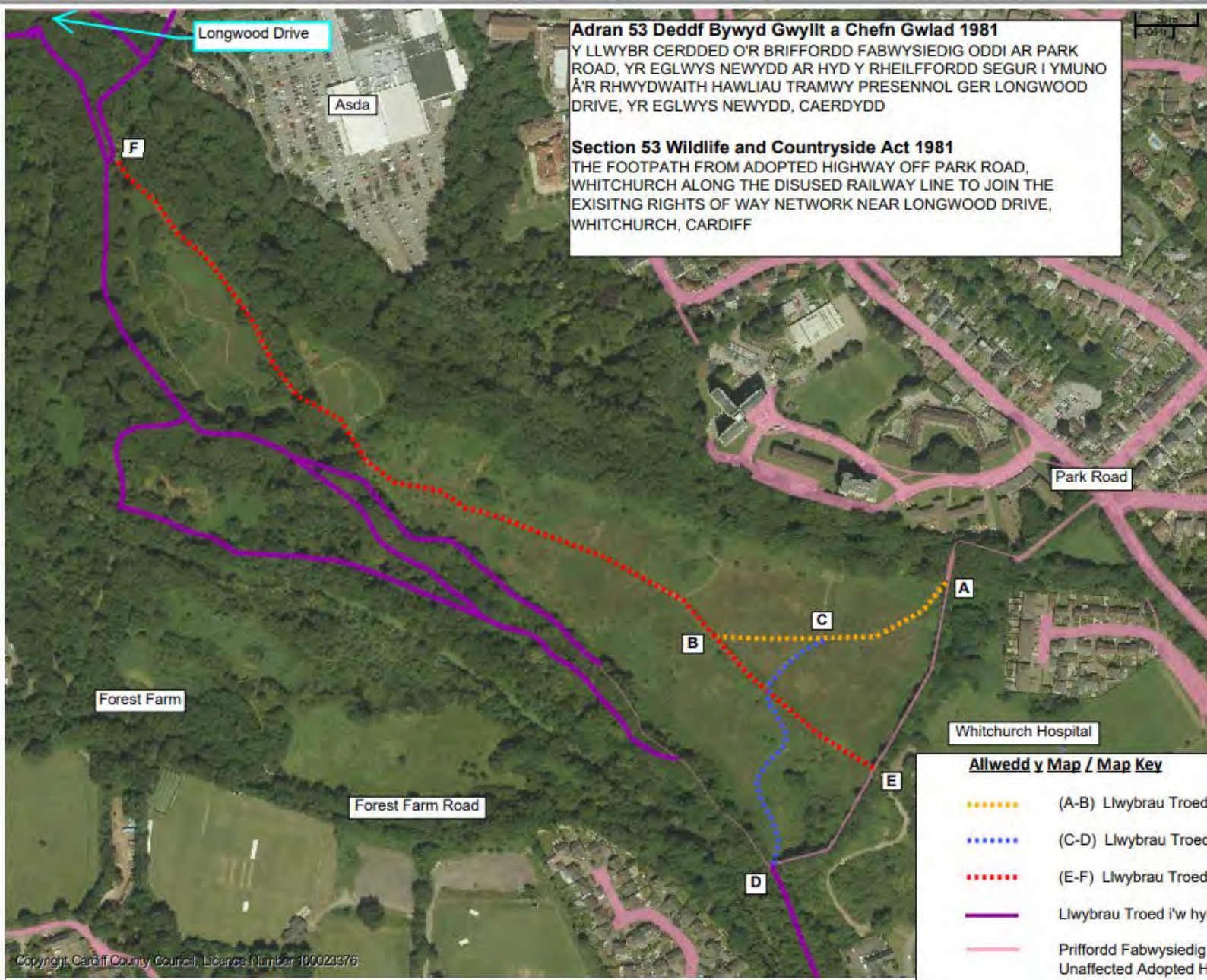


# Whitchurch Hospital Meadows site visit

Undertaken by Public Rights of Way Officer, Cardiff Council

Date: 24<sup>th</sup> September 2020



**Adran 53 Deddf Bywyd Gwyllt a Chefn Gwlad 1981**  
 Y LLWYBR CERDDED O'R BRIFFORDD FABWYSIEDIG ODDI AR PARK ROAD, YR EGLWYS NEWYDD AR HYD Y RHEILFFORDD SEGUR I YMUNO A'R RHWYDWAITH HAWLIAU TRAMWY PRESENNOL GER LONGWOOD DRIVE, YR EGLWYS NEWYDD, CAERDYDD

**Section 53 Wildlife and Countryside Act 1981**  
 THE FOOTPATH FROM ADOPTED HIGHWAY OFF PARK ROAD, WHITCHURCH ALONG THE DISUSED RAILWAY LINE TO JOIN THE EXISTING RIGHTS OF WAY NETWORK NEAR LONGWOOD DRIVE, WHITCHURCH, CARDIFF



**Cyngor Caerdydd**  
**Cardiff Council**



**CHIEF EXECUTIVE**  
 Neudd y Sir, Glanfa'r Iwerydd CAERDYDD CF10 4UW  
 Tel: 029 20872088  
 County Hall, Atlantic Wharf CARDIFF CF10 4UW  
 Tel: 029 20872087

**Whitchurch Meadows\_Aerial Map**  
 Scale: 1:3000  
 Printed on: 5/8/2020 at 12:20 PM

© Crown copyright and database rights (2014).  
 This copy is produced specifically to supply  
 County Council information NO further copies  
 may be made.  
**Ordnance Survey 100023376 (2014).**

**Allwedd y Map / Map Key**

- ..... (A-B) Llwybrau Troed nas Effeithir / Footpaths to be added
- ..... (C-D) Llwybrau Troed nas Effeithir / Footpaths to be added
- ..... (E-F) Llwybrau Troed nas Effeithir / Footpaths to be added
- Llwybrau Troed i'w hychwanegu / Unaffected Footpaths
- Priffordd Fabwysiedig nas Effeithir / Unaffected Adopted Highway





Entrance from Park Rd to railway path and Lady Cory Fields



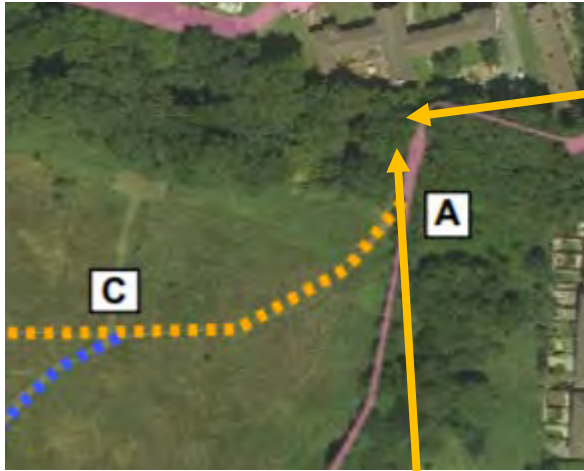
View from railway bridge looking towards Location A and adopted footpath



Walking from Park Rd towards railway bridge



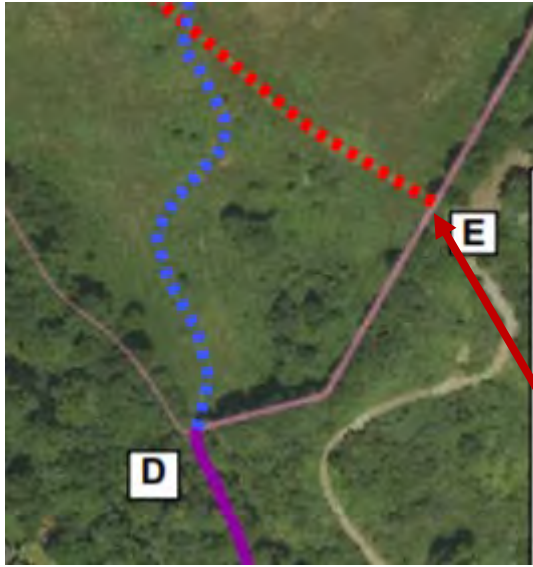
## Location A



Meadow field boundary fence from gate post at Location A heading south; Vegetation overgrown entire length of Meadow field and only access points are where fences have been damaged and vegetation removed.



## Location E



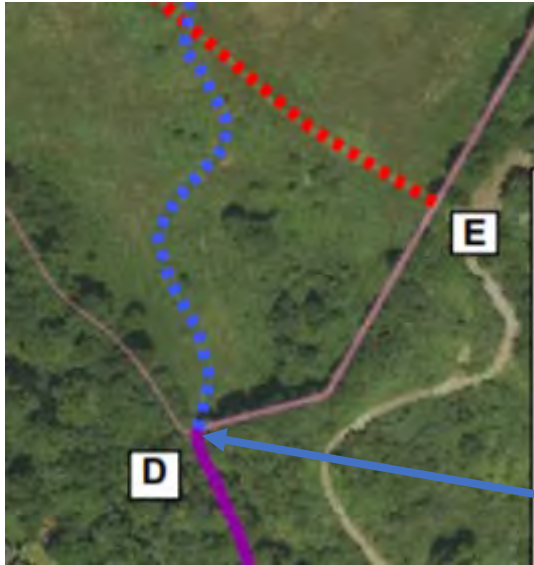
Remains of the old fence line from Location E are still visible. The photo view is looking into the Whitchurch Meadows.

Additional photos clearly show the meadow field boundary fence partly in situ along the adopted footpath.





## Location D

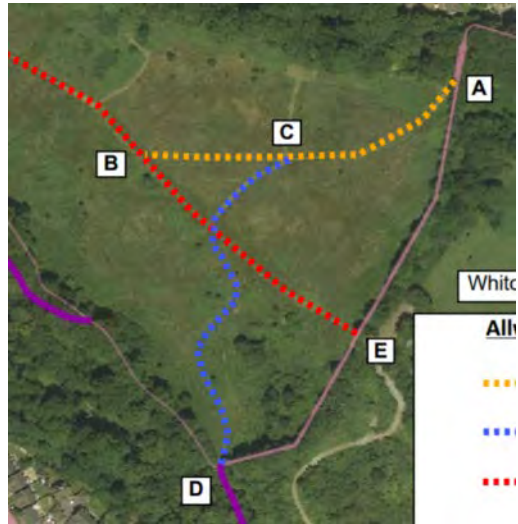


Location D: Farm gate pushed to the side of path and locks still in situ on gate post. Clearly no public access was intended at this location.





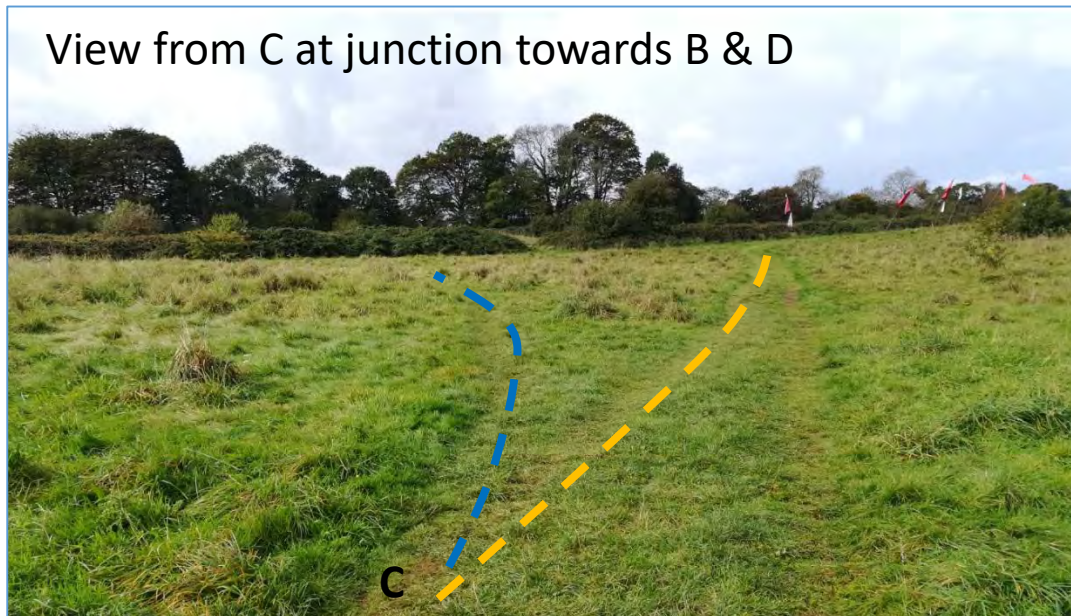
## Location C



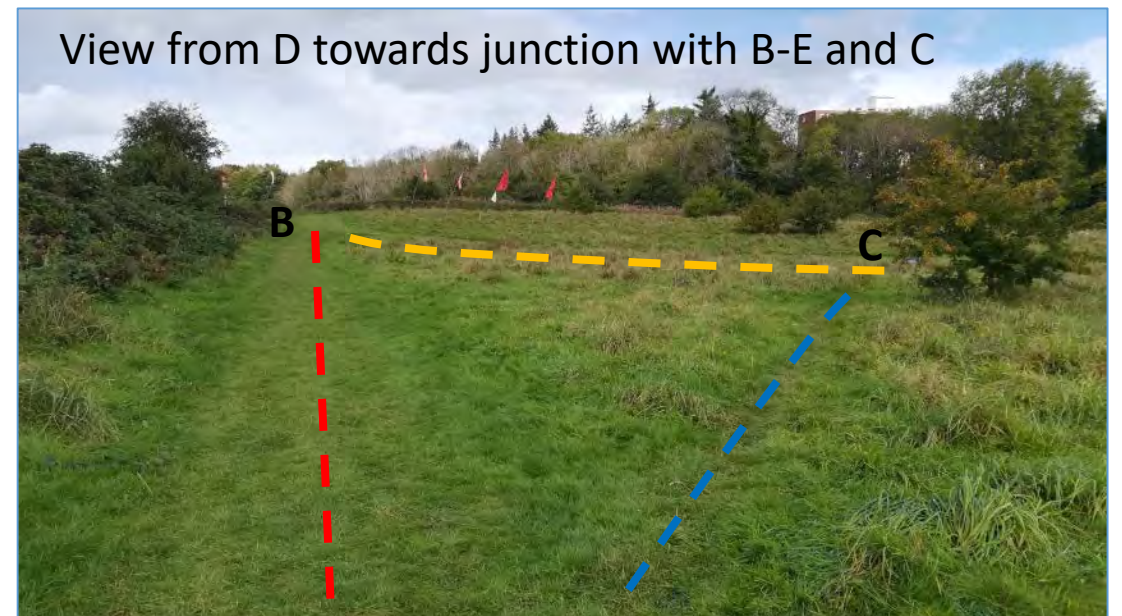
View from A towards C



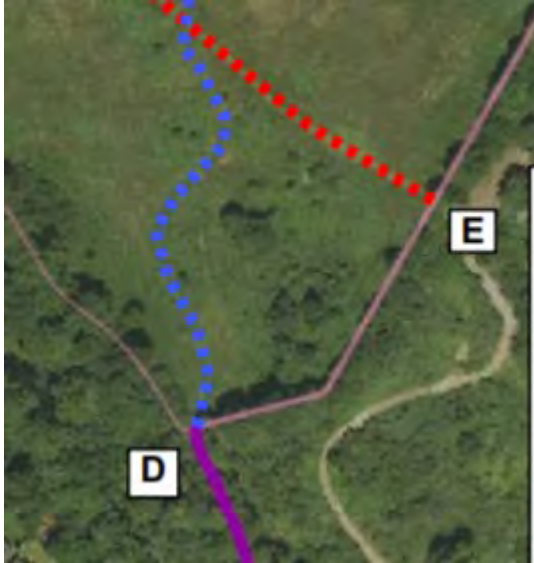
View from C at junction towards B & D



View from D towards junction with B-E and C





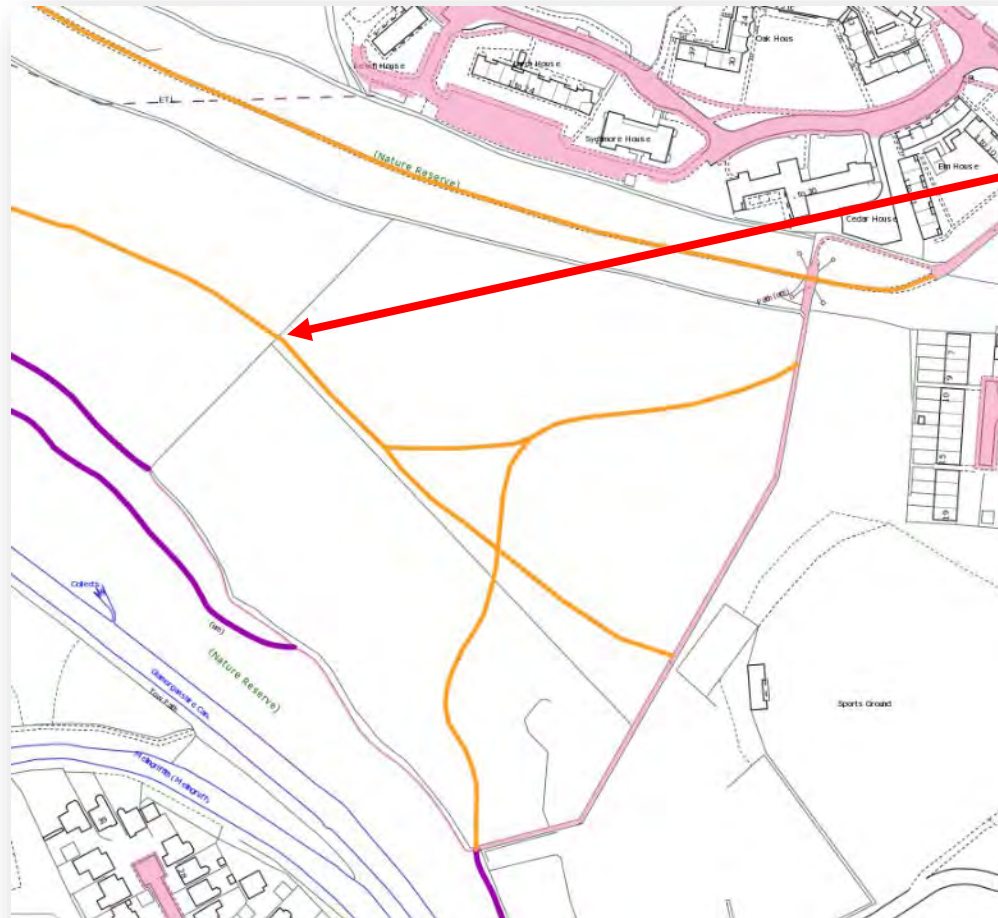


Additional path leading to adopted footpath; not included on application but shows an additional breach of the old fence line around the meadows

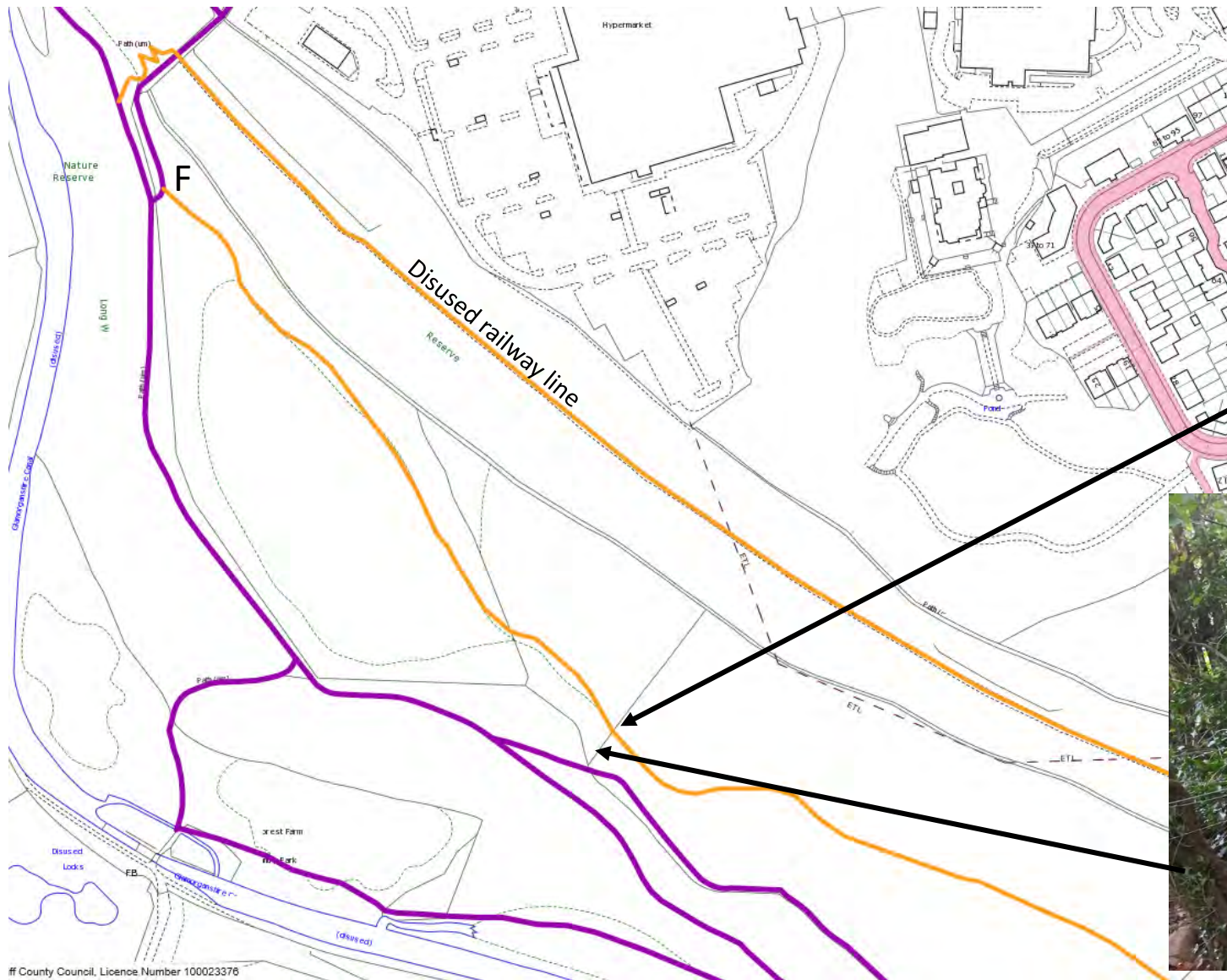




Approximate location of the old boundary fence line between fields; Vegetation is very overgrown so no fencing across the field is visible at the moment







# County Council, Licence Number 100023376



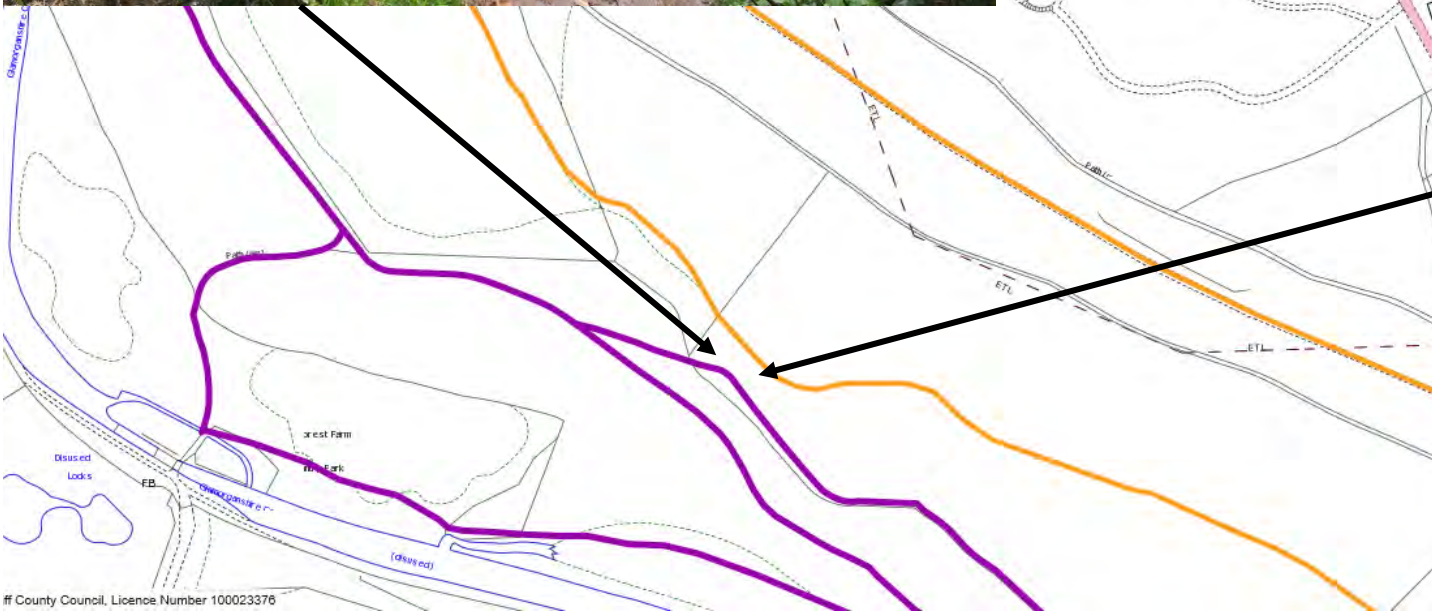
Location F: Locked farm gate with gap for walkers to get through



Boundary fence line blocking access to meadow field; apparently used to be a stile at this point



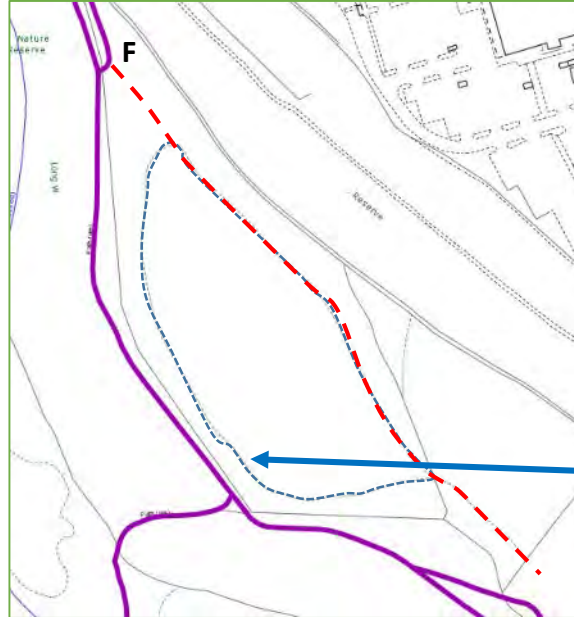
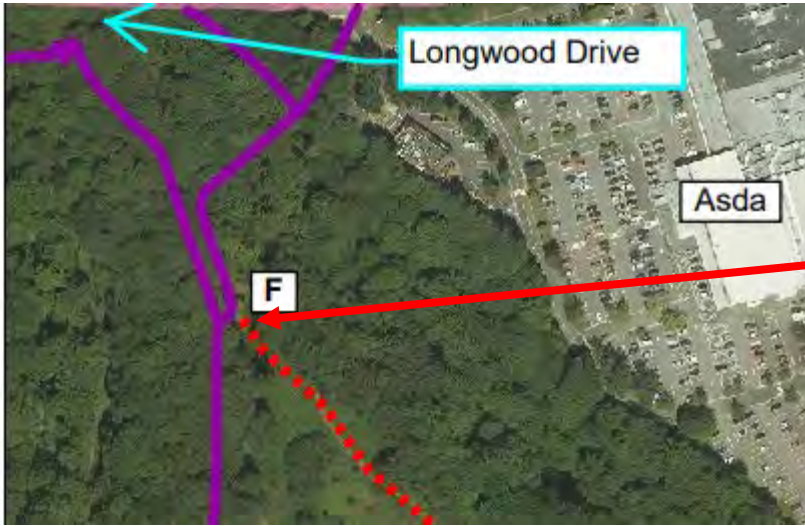
Clearly waymarked Public Footpaths; View looking into the meadow field



View of footpaths from meadow field heading towards locked gate



## Location F



Location F the Public Footpath and the claimed path split off in different directions. There is no signage at this location and it is open as it is the start of the Top Meadows managed by Parks.

The paths are well worn and well walked. There is a circular walking route around the Top Meadow.





Parks information board is located by the railway bridge near Coryton Roundabout. The map clearly shows only the Public Rights of Way footpaths and no additional public access across 'Top Meadow' or Whitchurch meadows.



The Public Rights of Way Footpaths which run parallel to the Whitchurch meadows field are clearly waymarked. The gradient along some sections is very steep and the vegetation is very overgrown making it difficult to cross from the path into the meadow fields. These photos show the variations of gradient along the southern boundary of the site.

